

KEA祥兴

广东金利祥兴五金精密制造有限公司

地址: 广东省肇庆市高要区金利镇永利工业园西区永利街33号

国内电话: 0758-8575888 传真: 0758-8570182

全国服务热线: 400-600-8883

GuangDong JinLi XiangXing Precision Metal Manufacturing Co., Ltd

Address: 33 Yongli St., Yongli Industrial Zone West, Jinli Town,
Gaoyao District, 526105 Zhaoqing City, Guangdong Province, China
International: +86-758-8577913 Fax: +86-758-8574982

www.keakea.com.cn



Hinge . Slide .
Gas Spring . Sliding Door
铰链 · 滑轨 · 气撑 · 移门

产品技术应用手册
Product Technology Application Catalog

www.keakea.com.cn

KEA祥兴

Keep Excellent Always
将卓越进行到底



匠心人 / 探索力
Ingenuity Successor
Explorative Power

我们以卓越的品质激励客户
We inspire our customers with excellent quality

KEA祥兴

Company Profile

公司简介



“我们不仅制造五金产品，更缔造美好生活”

KEA祥兴，是一家集设计研发、生产、销售于一体的国际化五金企业，自主建立了一套“木门，铝框门，玻璃门，美式橱柜门，特殊角度门板”的基础五金系统。1987年成立至今，从小型作坊到生产面积达30000多平方米的现代化生产基地。创新，始终让KEA祥兴走在五金行业的最前沿，不仅研发制造一系列具有原创专利的五金产品，更不断引领行业技术革新的前行方向。我们不仅制造五金产品，更用匠心独具的研发生产能力为人们缔造安静、舒适、高品质的美好生活。

“每次1%的进步背后，都是对100%品质的极致追求”

KEA祥兴作为五金行业品质制造与技术创新的佼佼者。从二段力阻尼铰链、美式内置阻尼铰链、油缸缓冲开关、三向快装底座等一系列的技术创新，刷新了业界对铰链的认知，开创了全新的技术潮流。现拥有100多项五金产品的发明、技术专利，这些成就的背后，来自于每一位“KEA祥兴人”对于产品品质的不懈努力和极致追求。

“走向世界，成为中国制造的骄傲”

KEA祥兴经过多年布局，开启了品牌全球化、多元化发展的腾飞之路。产品凭极致的技术原创与高品质的竞争力，畅销全球多个国家及地区，营销网络触及全球，并与多家业内知名品牌达成战略合作。让“中国制造”走向世界，让“中国技术”成为民族之光，不仅是一句口号，更是所有KEA祥兴人矢志不渝的奋斗目标。

“We not only make hardware products, but also create a better life”

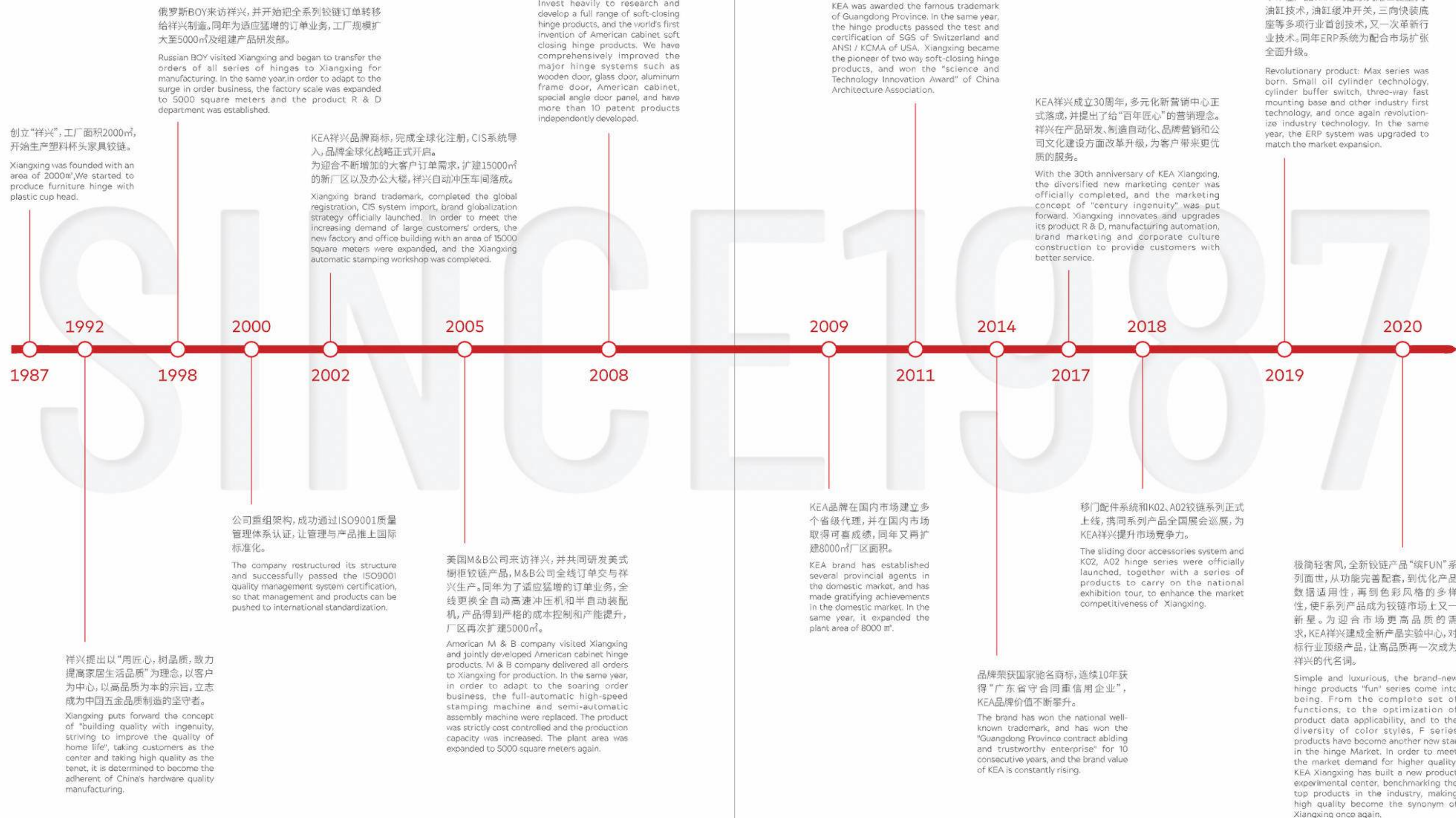
Xiangxing is an international hardware enterprise integrating design, development, production and sales. It has established a set of basic hardware system for "wooden door, aluminum frame door, glass door, American cabinet door and special angle door panel". Since its establishment in 1987, it has developed from a small workshop to a modern production line with a production area of 30000 square meters. Innovation always keeps Xiangxing at the forefront of the hardware industry. It not only develops and manufactures a series of hardware products with original patents, but also continuously leads the direction of technological innovation in the industry. We not only manufacture hardware products, but also create a quiet, comfortable and high-quality life for people with our unique R & D and production capacity.

“Behind every 1% improvement is the ultimate pursuit of 100% quality”

Xiangxing is the leader of quality manufacturing and technological innovation in the hardware industry. A series of technological innovations, such as two way soft-closing hinge, American soft-closing hinge, cylinder buffer switch and three-way quick mounting base, have refreshed the industry's understanding of hinge and created a new technical trend. At present, we have more than 100 invention and technology patents of hardware products. Behind these achievements are the unremitting efforts and ultimate pursuit of product quality by every "Xiangxing people".

“Going global to become the pride of made in China”

After years of layout, Xiangxing has opened the road of brand globalization and diversified development. Products with the ultimate technical originality and high-quality competitiveness, sell well in many countries and regions around the world, marketing network reach the world, and achieve strategic cooperation with a number of well-known brands in the industry. Let "made in China" go to the world and make "Chinese technology" become the light of the nation is not only a slogan, but also the unwavering goal of all Xiangxing people.





KEA 祥兴

Brand Concept 品牌理念

大道至简：专注，是祥兴成功的关键。我们将复杂的事做简单，将简单的事做极致，不断缔造品质标杆。

创新驱动：创新是品牌持续成长的驱动力。通过持续创新，更好的提升人们的生活品质，为企业发展提供生机和活力。

以人为本：祥兴始终以缔造美好家居生活为己任。通过设计与创新，品质与服务，为客户打造专属产品。以人为本，精益求精，既是祥兴的待客之道，亦是我们的经营之本。

勇攀高峰：对于卓越的追求，是品牌持续发展源动力。勇攀高峰，永不止步，是所有祥兴人的信念，也是对客户不变的承诺。

Concentration is the key to xiangxing's success. We will do the complex things simply, do simple things to be ultimate. Constantly create quality benchmarking.

Innovation is the driving force of brand sustainable growth. Through continuous innovation, we can better improve people's quality of life and provide vigor and vitality for the development of enterprises.

Xiangxing always takes creating a better home life as its own responsibility. Through design and innovation, quality and service, to create exclusive products for customers. People oriented and striving for improvement is not only the way of Xiangxing's hospitality, but also the foundation of our business.

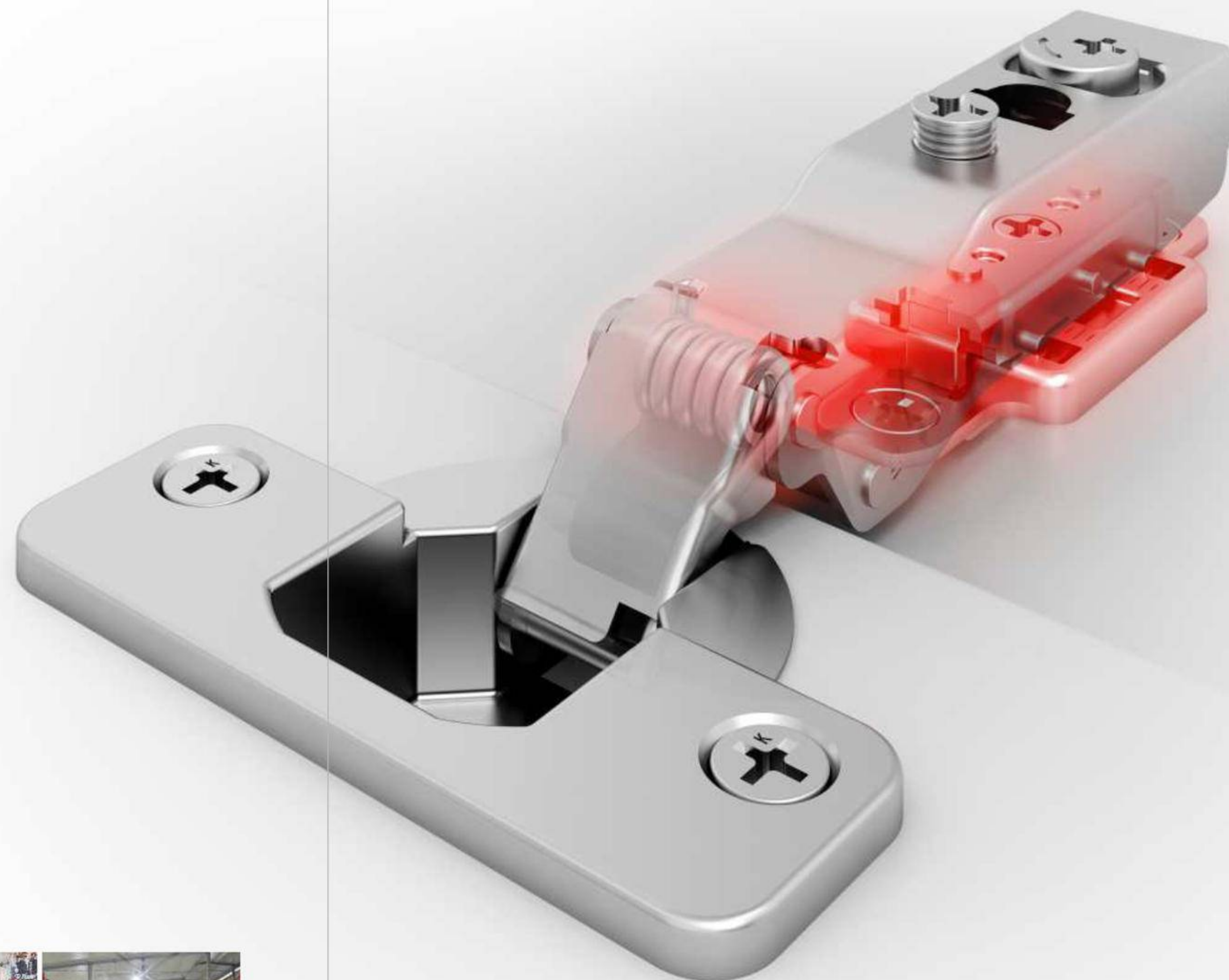
The pursuit of excellence is the driving force for the sustainable development of the brand. Climbing the peak bravely and never stop is the faith of all Xiangxing people, and also the constant commitment to customers.

Responsibility

责任

打造一个理想的家居已经成为判断一个家庭生活品质高低的重要标准,追求产品高端品质也成为祥兴一份重要的责任。创立以来,从生产工艺到自动化流水线,从生产标准化到精益生产,从追逐品质到超越欧美标品质,祥兴不断变革,一直保持卓越,为的就是对客户的一份责任,也是完美表达美好家居生活品质理念的一个重要组成部分。

Building an ideal home has become an important standard to judge the quality of a family's life, and the pursuit of high-end product quality has become an important responsibility of Xiangxing. Since its establishment, from production process to automatic assembly line, from production standardization to lean production, from pursuing quality to surpassing European and American Standard quality, Xiangxing has been constantly changing and maintaining excellence, in order to be a responsibility to customers and an important part of the perfect expression of the concept of beautiful home life quality.





每次1%的进步背后,都是对100%品质的追求。这是匠心传人的那句独白,也是祥兴一直不忘的初心。创新能缔造美好生活,而品质是美好生活的本质,为此祥兴新成立的产品实验中心,以对标欧美标准为核心,勇攀行业高峰。

Behind every 1% progress is the pursuit of 100% quality. This is a monologue of ingenuity and also the original intention of Xiangxing. Innovation can create a better life, and quality is the essence of a better life. Therefore, Xiangxing's newly established product experiment center, with benchmarking European and American standards as the core, to bravely climb the industry peak.

开合寿命
Opening And Closing Life

100000次
cycles

Professional Experimental Center
专业实验中心



Quality Control Executive Standard 品质管控执行标准

品质标准

DIN EN 15570 欧盟家具铰链执行标准
ANSI/BHMA 美国橱柜五金执行标准
ANSI/KCMA 美国厨房和浴室柜性能和建设标准
KS F 4538 韩国杯型铰链执行标准
QB/T 2189-2013 中国家具五金杯状暗铰链执行标准
QB/T 2531-2010 中国厨房家具执行标准
T/CNHA 1002-2016 家居用缓冲型暗铰链团体执行标准
GB/T 10125 中国人工造气氛腐蚀试验执行标准
GB/T 6461 中国腐蚀试验后评级执行标准
ISO 6270 冷凝水气候试验国际执行标准

试验项目

安全过载测试:
垂直静态过载:
在门指定位置加载20kg重量,然后手动缓慢开关门(来回)10次。

水平静态过载:
把门打开最大角度,在指定门的位置用测量器垂直加载60N推力,每次停留10S,重复10次。

功能测试:
第1次自闭力:
在指定完全关闭门状态位置的0.5mm处测量,测试门指定位置点用测量器拉开,自闭力不得小于0.5N。
第1次打开力和关闭力:
在指定门的测量点,用测量器测量门的打开力度和关闭力度,打开力和关闭力不得大于20N。
第1次垂直静态过载:
在门指定位置加载15kg重量,然后手动缓慢开关门(来回)10次。
第1次水平静态过载:
把门打开最大角度,在指定门的位置用测量器垂直加载30N推力,每次停留10S,重复10次。

猛关门:
门在关闭状态,在门背指定位置连接垂直绳索并加载5kg重量,确定离门完全关闭状态10mm处,加载重量应下降300mm的距离或下降关闭门30°所需的距离,以较小者为准,带阻尼功能铰链重复100次。

门下垂直基准点确认:
在耐久性测试前,应在关闭的门上确认基准点,基准点在门指定的位置上,测量后记录。

耐久性:
在门指定位置两侧加载各1kg重量,要求门达到7.5kg重量,进行50000次来回开合寿命测试。
门下垂直基准偏差:耐久性测试后,移除两个1kg重量后,应在基准点确认处测量,测量精度为±0.1mm,下垂量不得超过门宽的0.5%。
第2次垂直静态过载:
在门指定位置加载15kg重量,然后手动缓慢开关门(来回)10次。
第2次水平静态过载:
把门打开最大角度,在指定门的位置用测量器垂直加载30N推力,每次停留10S,重复10次。

第2次自闭力:
在指定完全关闭门状态位置的0.5mm处测量,测试门指定位置点用测量器拉开,自闭力不得小于0.5N。
第2次打开力和关闭力:
在指定门的测量点,用测量器测量门的打开力度和关闭力度,打开力和关闭力不得大于20N。

人工造气氛腐蚀盐雾测试:
根据GB/T10125、GB/T6461执行标准进行中性盐雾测试,测试时间为48小时以上,测试后评级达9级以上。

Quality Standard

DIN EN EU Executive Standard for Furniture Hinge
ANSI/BHMA American National Executive Standard for Cabinet Hardware
ANSI/KCMA American National Standard for Kitchen and Bathroom Cabinet Performance and Construction
KS F 4538 Korea Executive Standard for Cup Type Hinge
QB/T 2189-2013 China Executive Standard for Furniture Hardware Cup-shaped Concealed Hinge
QB/T 2531-2010 China Executive Standard for Kitchen Furniture
T/CNHA 1002-2016 Group Executive Standard for Soft Closing Concealed Hinge for Home Use
GB/T 10125 China Executive Standard for Artificial Atmosphere Corrosion Test
GB/T 6461 China Executive Standard for Rating after The Corrosion Test
ISO 6270 International Executive Standard for Condensate Climate Test

Test Item

Safety Overload Test:
Vertical static overload: Load 20kg weight at the designated position of the door, and then manually open and close the door slowly (back and forth) 10 times.

Horizontal static overload: Open the door to the maximum angle, load 60N thrust vertically with a measurer at the designated door position, stay for 10 seconds each time, and repeat 10 times.

Function Test:
The first time self-closing force: Measure at 0.5mm from the designated position of the fully closed door, and open the test door at the designated position with a measurer. The self-closing force shall not be less than 0.5N.

The first time opening force and closing force: At the measurement point of the designated door, measure the opening force and closing force of the door with a measurer. The opening force and closing force shall not be greater than 20N.

The first time vertical static overload: Load 15kg weight at the designated position of the door, and then manually open and close the door slowly (back and forth) 10 times.

The first time horizontal static overload: open the door to the maximum angle, load 30N thrust vertically with a measurer at the designated door position, stay for 10 seconds each time, repeat 10 times

Door Slammed: When the door is closed, put a cable at the designated position on the back of the door vertically and hang 5kg weight. Make sure that at 10mm from the door fully closed, the load should be held at a distance of 300mm or the distance required to close door at 30°, whichever is less. The soft closing hinge shall be repeated 100 times.

Confirmation of the datum point of door sagging: Before the durability test, the datum point should be confirmed on the closed door, and the datum point should be at the designated position of the door, and make record after measurement

Durability: load 1kg weight on both sides of the door at the designated position, and the door must reach 7.5kg weight, and carry out 50000 cycles for opening and closing life test

Standard deviation of door sagging amount: After durability test, and remove two 1kg weights, it should be measured at the confirmed reference point. The measurement accuracy is 0.1mm, and the sagging amount shall not exceed 0.5% of the door width.

The second time vertical static overload: Load 15kg weight at the designated position of the door, and then manually open and close the door slowly (back and forth) 10 times.

The second time horizontal static overload: Open the door to the maximum angle, load 30N thrust vertically with a measurer at the designated door position, stay for 10 seconds each time, and repeat 10 times.

The second time self-closing force: Measure at 0.5mm from the designated position of the fully closed door, and open the test door at the designated position with a measurer. The self-closing force shall not be less than 0.5N.

The second time opening force and closing force: at the measurement point of the designated door, measure the opening force and closing force of the door with a measurer. The opening force and closing force shall not be greater than 20N.

Artificial atmosphere corrosion salt spray test:
Perform neutral salt spray test according to GB/T10125 and GB/T6461 executive standards. The test time is more than 48 hours, and the rating after the test is above level 9.



Trust

信任

源源不断的探索力,推动市场发展前行,KEA祥兴凭极致的技术原创和高品质的竞争力,产品畅销全球多个国家及地区,营销网络触及全球。

持续不断的合作来源于创新的源动力,完善的产品体系,至臻至诚的服务。KEA祥兴品牌一直以来得到每位客户的信任与认可,并与国内外多家知名品牌达成战略合作。

A steady stream of explorative power,promote market development forward.Xiangxing rely on the ultimate original technology and high quality competitiveness.Xiangxing's products sell well in many countries and regions all over the world, and its marketing network reaches the world.

Continuous cooperation comes from the power of innovation, perfect product system and sincere service. Xiangxing brand has always been trusted and recognized by each customer, and has achieved strategic cooperation with many well-known brands at home and abroad.



Diversified

多元化

以创新为内核的KEA祥兴,奉行大道至简的品牌理念,把多元化之路的多面性发挥得淋漓尽致。在多年技术积累下,不断深究探索,把看似简单的铰链做到极致。从适用环境功能,到产品使用功能,都通过创新而变得融会贯通。

Taking innovation as the core, Xiangxing pursues the brand concept of "road to simplicity", and gives full play to the diversity of the road. With years of technology accumulation, we have been exploring the simple hinge to the extreme. From the applicable environment function to the product use function, all become integrated through innovation.

Openness



开放性

KEA祥兴提供的不仅仅是产品与服务,更是对品质生活的执着与向往。开放性极强的产品文化,使KEA祥兴在家居五金领域不断求变,从基础五金系统,延展到功能五金系统、局部照明系统等,希望通过我们的专业,为人们缔造更美好的生活品质。

Xiangxing provides not only products and services, but also persistence and yearning for quality life. The highly open product culture makes Xiangxing constantly seek changes in the field of home hardware, from basic hardware system to functional hardware system, local lighting system and other fields, hoping to create better quality of life for people through our specialty.

GS06

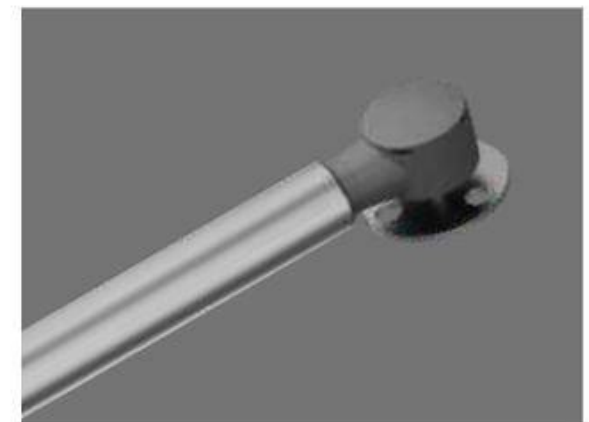
KEA祥兴

气撑应用系统
上翻门标准应用

Gas Spring Application System
Upturn Door Standard Application

气撑系列

Gas Spring Series



GS-01 气动支撑

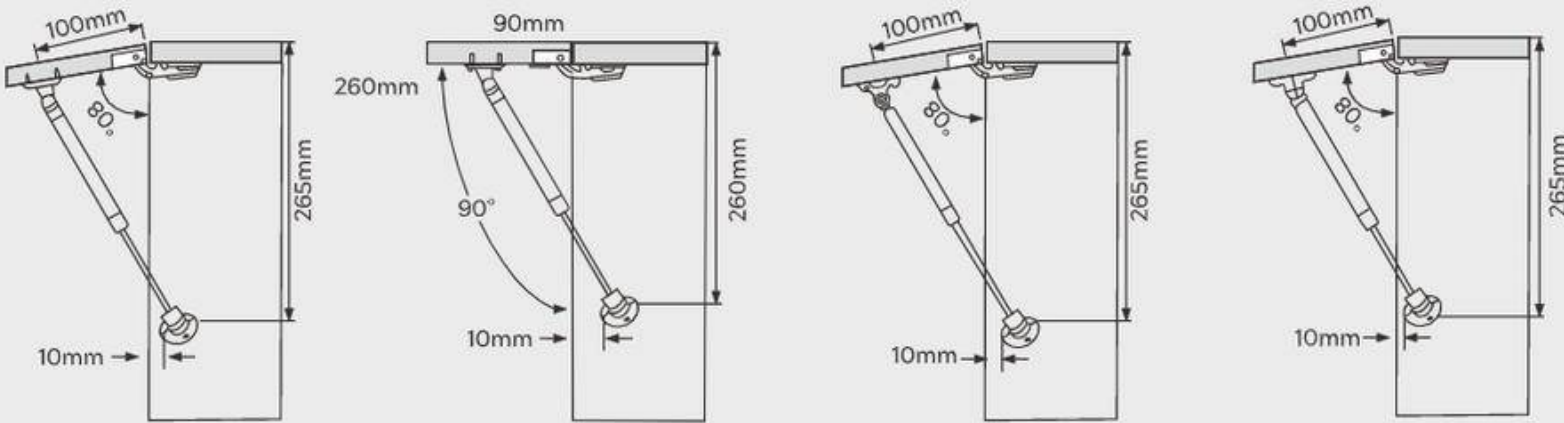
Gas Spring



描述 Description

主要材质: 钢
管体: 20#精密无缝钢管
中心杆: 45#钢
常规行程: 90mm
表面处理: 喷漆

Materials: Steel
Tube body: 20# precision seamless steel tubes
Center bar: 45# Steel
Standard stroke: 90mm
Finish: Painting



Model 产品型号	状态 Status 门板重量(kg) Door weight	门板高度(mm) Door height	80°				90°				110°			
			300	400	500	600	300	400	500	600	300	400	500	600
80N			≤2.6	≤2.2	≤1.7	≤1.3	≤2.4	≤2.0	≤1.6	≤1.2	≤2.1	≤1.7	≤1.4	≤1.0
100N			≤3.3	≤2.7	≤2.2	≤1.6	≤3	≤2.5	≤2.0	≤1.5	≤2.6	≤2.2	≤1.7	≤1.3
120N			≤4	≤3.3	≤2.6	≤2	≤3.6	≤3.0	≤2.4	≤1.8	≤3.2	≤2.6	≤2.1	≤1.6

订货号 Item no.	支/箱 Pcs/ctn
GS-01-60N	100
GS-01-80N	100
GS-01-100N	100
GS-01-120N	100

可选配件 Optional Accessories



A方孔定位配件
Square Hole Positioning Accessory



B圆孔定位配件
Round Hole Positioning Accessory



密封形式: 铜片、塑料片
Seal Form: Copper Cover, Plastic Cover

GS-02 气动支撑

Gas Spring

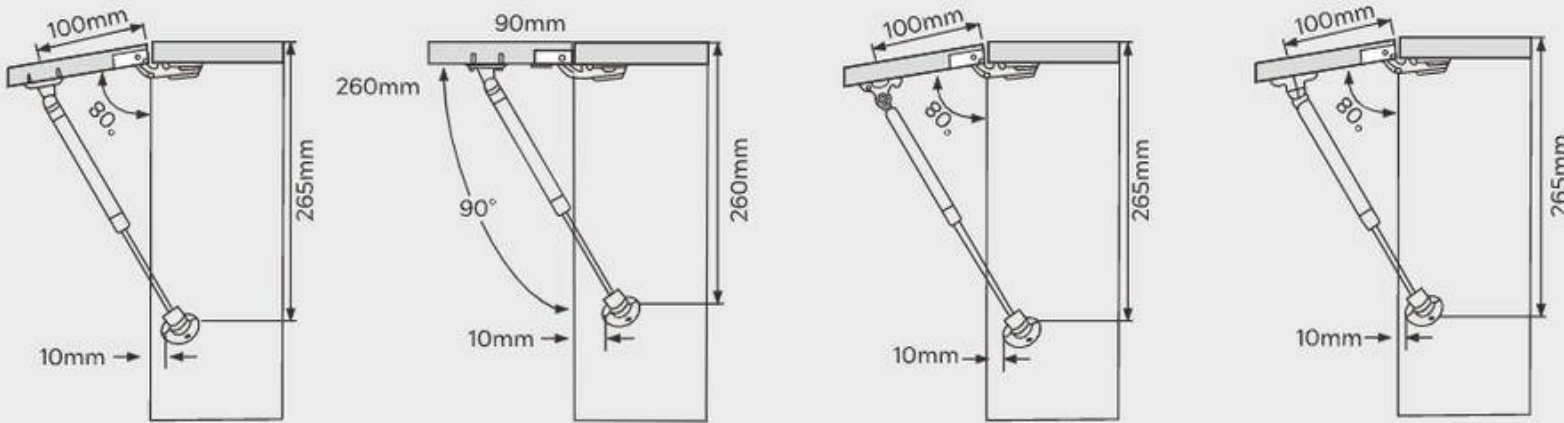
气撑应用系统
Gas Spring Application System



描述 Description

主要材质: 钢
管体: 20#精密无缝钢管
中心杆: 45#钢
常规行程: 90mm
表面处理: 喷漆

Materials: Steel
Tube body: 20# precision seamless steel tubes
Center bar: 45# Steel
Standard stroke: 90mm
Finish: Painting



Model 产品型号	状态 Status 门板重量(kg) Door weight	门板高度(mm) Door height	80°				90°				110°			
			300	400	500	600	300	400	500	600	300	400	500	600
80N			≤2.6	≤2.2	≤1.7	≤1.3	≤2.4	≤2.0	≤1.6	≤1.2	≤2.1	≤1.7	≤1.4	≤1.0
100N			≤3.3	≤2.7	≤2.2	≤1.6	≤3	≤2.5	≤2.0	≤1.5	≤2.6	≤2.2	≤1.7	≤1.3
120N			≤4	≤3.3	≤2.6	≤2	≤3.6	≤3.0	≤2.4	≤1.8	≤3.2	≤2.6	≤2.1	≤1.6

订货号 Item no.	支/箱 Pcs/ctn
GS-02-60N	100
GS-02-80N	100
GS-02-100N	100
GS-02-120N	100

可选配件 Optional Accessories



A方孔定位配件
Square Hole Positioning Accessory



B圆孔定位配件
Round Hole Positioning Accessory



密封形式: 铜片、塑料片
Seal Form: Copper Cover, Plastic Cover

GS-03 气动支撑

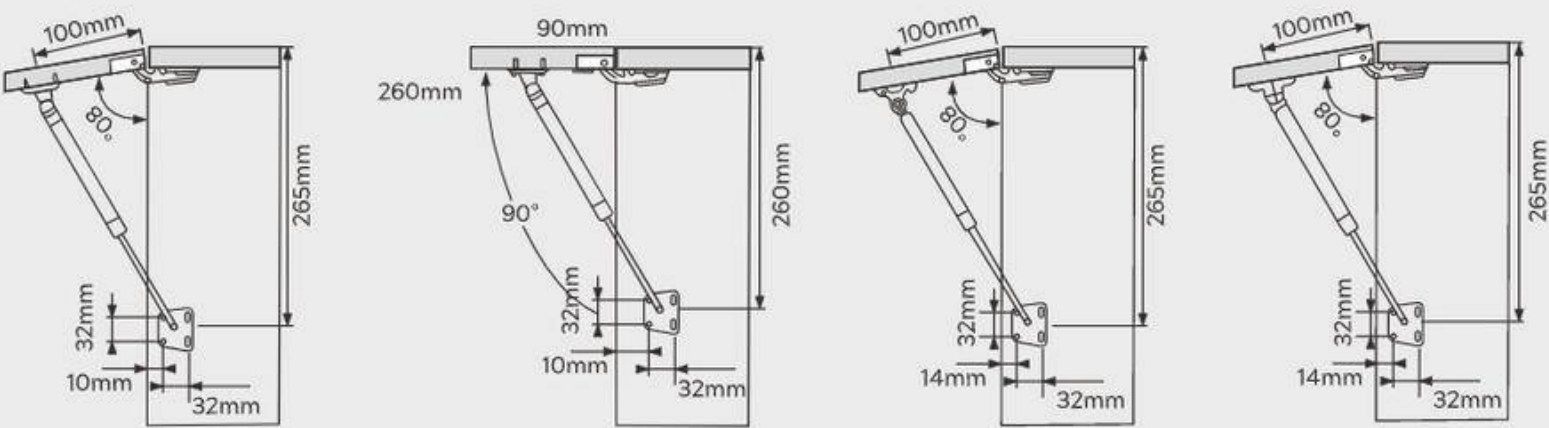
Gas Spring



描述 Description

主要材质: 钢
管体: 20#精密无缝钢管
中心杆: 45#钢
常规行程: 90mm
表面处理: 喷漆

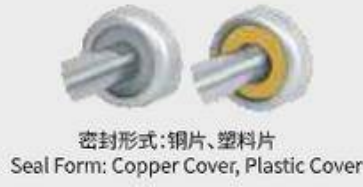
Materials: Steel
Tube body: 20# precision seamless steel tubes
Center bar: 45# Steel
Standard stroke: 90mm
Finish: Painting



Model 产品型号	门板重量(kg) Door weight	状态 Status 门板高度(mm) Door height	80°				90°				110°			
			300	400	500	600	300	400	500	600	300	400	500	600
80N			≤2.6	≤2.2	≤1.7	≤1.3	≤2.4	≤2.0	≤1.6	≤1.2	≤2.1	≤1.7	≤1.4	≤1.0
100N			≤3.3	≤2.7	≤2.2	≤1.6	≤3	≤2.5	≤2.0	≤1.5	≤2.6	≤2.2	≤1.7	≤1.3
120N			≤4	≤3.3	≤2.6	≤2	≤3.6	≤3.0	≤2.4	≤1.8	≤3.2	≤2.6	≤2.1	≤1.6

订货号 Item no.	支/箱 Pcs/ctn
GS-03-60N	100
GS-03-80N	100
GS-03-100N	100
GS-03-120N	100

可选配件 Optional Accessories



密封形式: 铜片、塑料片
Seal Form: Copper Cover, Plastic Cover

GS-04 气动支撑

Gas Spring

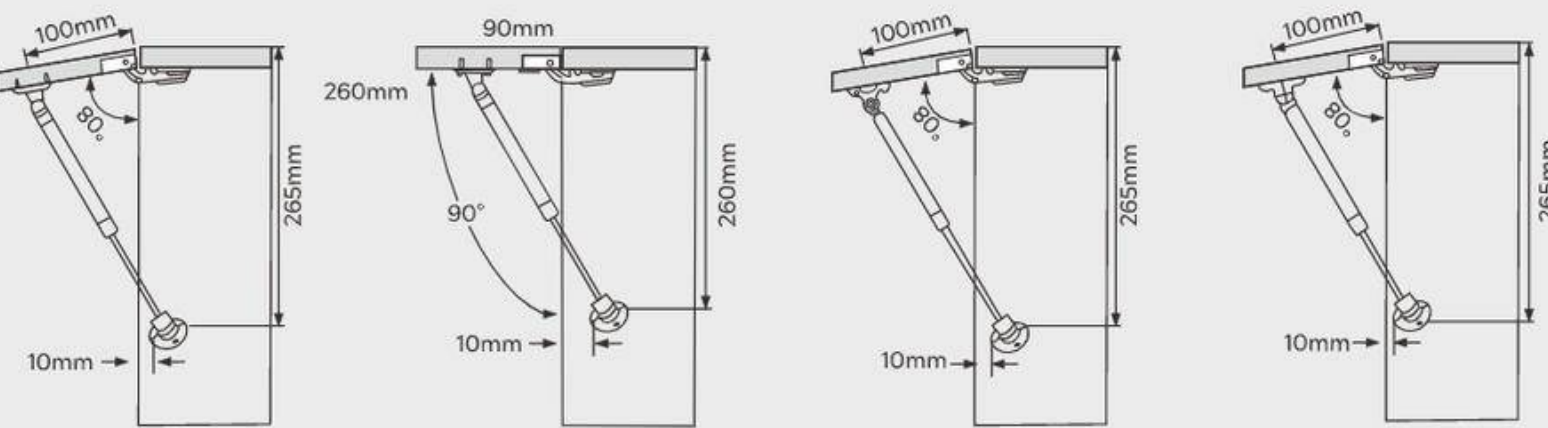
气撑应用系统
Gas Spring Application System



描述 Description

主要材质: 钢
管体: 20#精密无缝钢管
中心杆: 45#钢
常规行程: 90mm
表面处理: 喷漆

Materials: Steel
Tube body: 20# precision seamless steel tubes
Center bar: 45# Steel
Standard stroke: 90mm
Finish: Painting



Model 产品型号	门板重量(kg) Door weight	状态 Status 门板高度(mm) Door height	80°				90°				110°			
			300	400	500	600	300	400	500	600	300	400	500	600
80N			≤2.6	≤2.2	≤1.7	≤1.3	≤2.4	≤2.0	≤1.6	≤1.2	≤2.1	≤1.7	≤1.4	≤1.0
100N			≤3.3	≤2.7	≤2.2	≤1.6	≤3	≤2.5	≤2.0	≤1.5	≤2.6	≤2.2	≤1.7	≤1.3
120N			≤4	≤3.3	≤2.6	≤2	≤3.6	≤3.0	≤2.4	≤1.8	≤3.2	≤2.6	≤2.1	≤1.6

订货号 Item no.	支/箱 Pcs/ctn
GS-04-60N	100
GS-04-80N	100
GS-04-100N	100
GS-04-120N	100

可选配件 Optional Accessories



A方孔定位配件
Square Hole Positioning Accessory

B圆孔定位配件
Round Hole Positioning Accessory

密封形式: 铜片、塑料片
Seal Form: Copper Cover, Plastic Cover

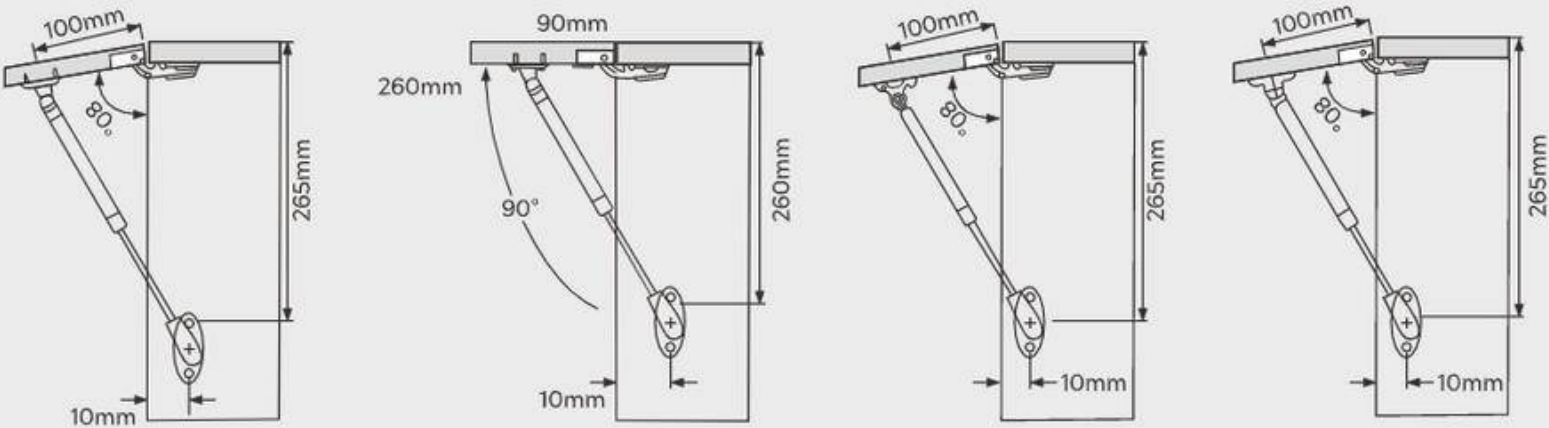
GS-05 气动支撑 Gas Spring



描述 Description

主要材质: 钢
管体: 20#精密无缝钢管
中心杆: 45#钢
常规行程: 90mm
表面处理: 喷漆

Materials: Steel
Tube body: 20# precision seamless steel tubes
Center bar: 45# Steel
Standard stroke: 90mm
Finish: Painting



Model 产品型号	状态 Status		80°				90°				110°			
	门板重量(kg) Door weight	门板高度(mm) Door height	300	400	500	600	300	400	500	600	300	400	500	600
80N			≤2.6	≤2.2	≤1.7	≤1.3	≤2.4	≤2.0	≤1.6	≤1.2	≤2.1	≤1.7	≤1.4	≤1.0
100N			≤3.3	≤2.7	≤2.2	≤1.6	≤3	≤2.5	≤2.0	≤1.5	≤2.6	≤2.2	≤1.7	≤1.3
120N			≤4	≤3.3	≤2.6	≤2	≤3.6	≤3.0	≤2.4	≤1.8	≤3.2	≤2.6	≤2.1	≤1.6

订货号 Item no.	支/箱 Pcs/ctn
GS-05-60N	100
GS-05-80N	100
GS-05-100N	100
GS-05-120N	100

可选配件 Optional Accessories



密封形式: 铜片、塑料片
Seal Form: Copper Cover, Plastic Cover

GS-06 气动支撑 Gas Spring

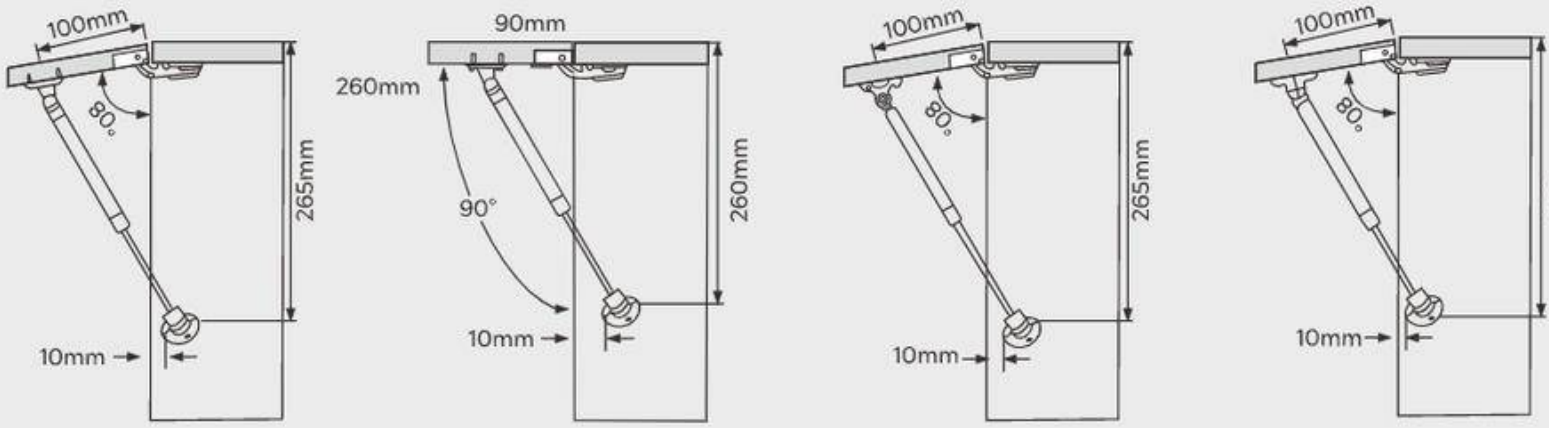
气撑应用系统
Gas Spring Application System



描述 Description

主要材质: 钢
管体: 20#精密无缝钢管
中心杆: 45#钢
常规行程: 90mm
表面处理: 喷漆

Materials: Steel
Tube body: 20# precision seamless steel tubes
Center bar: 45# Steel
Standard stroke: 90mm
Finish: Painting



Model 产品型号	状态 Status		80°				90°				110°			
	门板重量(kg) Door weight	门板高度(mm) Door height	300	400	500	600	300	400	500	600	300	400	500	600
80N			≤2.6	≤2.2	≤1.7	≤1.3	≤2.4	≤2.0	≤1.6	≤1.2	≤2.1	≤1.7	≤1.4	≤1.0
100N			≤3.3	≤2.7	≤2.2	≤1.6	≤3	≤2.5	≤2.0	≤1.5	≤2.6	≤2.2	≤1.7	≤1.3
120N			≤4	≤3.3	≤2.6	≤2	≤3.6	≤3.0	≤2.4	≤1.8	≤3.2	≤2.6	≤2.1	≤1.6

订货号 Item no.	支/箱 Pcs/ctn
GS-06-60N	100
GS-06-80N	100
GS-06-100N	100
GS-06-120N	100

可选配件 Optional Accessories



A方孔定位配件
Square Hole Positioning Accessory



B圆孔定位配件
Round Hole Positioning Accessory



密封形式: 铜片、塑料片
Seal Form: Copper Cover, Plastic Cover